



# LED HIGHBAYS

Designed to provide drastic reductions in both energy consumption and maintenance requirements, V-TAC's LED High Bay Series provide uniform light with no dark patches and good colour rendering. Available models 50W - 200W

## PRODUCT FEATURES

- Powerful LED light source with a unique design
- Extensive Options can replace all types of Standard MH High bays
- Aluminium Diffuser with multiple Beam Angle's to choose from 45'D / 90'D / 120'D
- Shatter Proof Perspex Lens
- High Thermal Conductivity, Low Luminous Decay, Pure Colours & No Heavy Shade
- The unique design of Radiator fuses with the Lamp Box perfectly hence diffuses the heat conduction efficiently which reduces the temperature of inside lamp & ensures the LED long life span
- Non - Flickering
- No UV Radiation

## APPLICATIONS

- Perfect fit for Industrial Usage, Warehouse & Super Markets, Workshop's, Factories, Warehouse's, Highway, toll Stations, Gas Stations, Malls, Exhibition Halls, Stadium's & other vast areas





6200  
LUMENS

**50W**  
VT-9052

120<sup>++</sup>  
LM/W  
HIGH  
LUMENS

NA 3000K Warmwhite  
5540 4500K Daywhite  
5539 6000K White

HIGH POWER  
SMD

**300W**  
EQUIVALENT



8680  
LUMENS

**70W**  
VT-9073

120<sup>++</sup>  
LM/W  
HIGH  
LUMENS

NA 3000K Warmwhite  
5535 4500K Daywhite  
5536 3000K Warmwhite

HIGH POWER  
SMD

**630W**  
EQUIVALENT

Model No.	VT-9052	VT-9073
Watts	50W	70W
EQ. Watts	300W	630W
Voltage/Frequency	AC: 100-240V, 50/60Hz	AC: 100-240V, 50/60Hz
Luminous Flux	6200lm	8680lm
LED Type	SMD	SMD
CRI	>70	>70
PF	> 0.9	> 0.9
Beam Angle	60/120'D	60/120'D
Body Type	Aluminum Diecasting	Aluminum Diecasting
IP Rating	IP44	IP44
Dimension	60°:348x 145x 346mm 120°:445x 107x 308mm	60°:348x 145x 346mm 120°:445x 107x 308mm

EAN Code 3000K  
EAN Code 4500K  
EAN Code 6000K

NA  
3800157608831  
3800157608824



NA  
3800157608824  
3800157608831





12000  
LUMENS  
**100W**  
VT-9104

120<sup>++</sup>  
LM/W  
HIGH  
LUMENS  
N/A 3000K Warmwhite  
5534 4500K Daywhite  
5532 6000K White

HIGH POWER  
SMD  
**900W**  
EQUIVALENT



18600  
LUMENS  
**150W**  
VT-9155

120<sup>++</sup>  
LM/W  
HIGH  
LUMENS  
NA 3000K Warmwhite  
5537 4500K Daywhite  
5538 6000K White

HIGH POWER  
SMD  
**1350W**  
EQUIVALENT

**Model No.**

Watts

EQ. Watts

Voltage/Frequency

Luminous Flux

LED Type

CRI

PF

Beam Angle

Body Type

IP Rating

Dimension

**VT-9104**

100W

900W

AC: 100-265V, 50/60Hz

12000lm

SMD

> 70

> 0.9

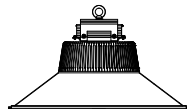
90/120'D

Aluminum

IP44

90°:428x 145x 345mm

120°:535x 107x 306mm



NA

3800157608848

3800157608855

**VT-9155**

150W

1350W

AC: 100-240V, 50/60Hz

18600lm

SMD

>70

>0.9

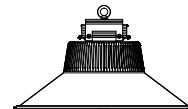
90/120'D

Aluminum Diecasting

IP44

90°:428x 145x 345mm

120°:535x 107x 306mm



N/A

3800157608848

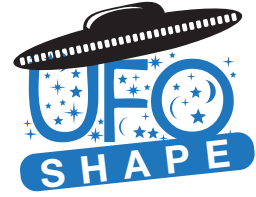
3800157608855

EAN Code 3000K  
EAN Code 4500K  
EAN Code 6000K



HIGH POWER  
SMD

120<sup>++</sup> LM/W  
HIGH LUMENS



**100W**  
VT-9111

N/A 3000K Warmwhite  
5543 4500K Daywhite  
5544 6000K White

**1000W**  
EQUIVALENT

**120°**  
BEAM ANGLE

**13500**  
LUMENS

**150W**  
VT-9166

N/A 3000K Warmwhite  
N/A 4500K Daywhite  
5545 6000K White

**1500W**  
EQUIVALENT

**120°**  
BEAM ANGLE

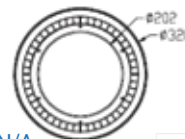
**21750**  
LUMENS

Model No.	VT-9111	VT-9166
Watts	100W	150W
EQ. Watts	1000W	1500W
Voltage/Frequency	AC: 100-277V, 50/60Hz	AC: 100-277V, 50/60Hz
Luminous Flux	13500lm	21750lm
LED Type	SMD	SMD
CRI	>70	>70
PF	>0.9	>0.9
Beam Angle	120°D	120°D
Body Type	Aluminum	Aluminum
IP Rating	IP65	IP65
Dimension	D:320mm x H149mm	D:320mm x H149mm



EAN Code 3000K  
EAN Code 4500K  
EAN Code 6000K

N/A  
3800157610476  
3800157610483



N/A  
N/A  
3800157610490

**NEW** LED LOWBAY

- ✔ Warehouses, shipping docks, stairwells and parking garages.
- ✔ Lightweight, Compact structure
- ✔ Indoor and outdoor
- ✔ Replacement of 500W CFL



**85W**  
**VT-9185**

NA 3000K Warmwhite  
5541 4500K Daywhite  
5542 6000K White

**500W**  
EQUIVALENT

**120°**  
BEAM ANGLE

**6800**  
LUMENS

**E40**  
BASE

<b>Model No.</b>	<b>VT-9185</b>
Watts	85W
EQ. Watts	500W
Voltage/Frequency	AC: 220-240V, 50/60Hz
Luminous Flux	6800lm
LED Type	SMD
CRI	> 80
PF	> 0.9
Beam Angle	120°D
Body Type	Aluminum
IP Rating	IP20
Dimension	D:222mm x H270mm



EAN Code 3000K  
EAN Code 4500K  
EAN Code 6000K

N/A  
3800157610001  
3800157610018